

## How to install trixbox\_2.8\_OpenVox\_A1200p.pdf

Test Tools:

trixbox CE 2.8.0

A1200P (2FXO+2FXS)

Step 1:

- Insert the OpenVox A1200P into the PCI slot, then install the trixbox 2.8.0
- After installing, login in to the trixbox. Please run the following command:  
`[root@trixbox~] # dahdi_genconf`  
Use this command it will be automatic generate two files:  
`/etc/dahdi/system.conf`  
`/etc/asterisk/dahdi-channels.conf`
- Renamed the file `chan_dahdi.conf.template` file, change it to `chan_dahdi.conf`. Please use the following command to achieve it:  
`cd /etc/asterisk`  
`mv chan_dahdi.conf.template chan_dahdi.conf`

Step 2: Modify the file `chan_dahdi.conf`

- Use the following command please:  
`vi chan_dahdi.conf`
- Access to the file, find this line: `#include chan_dahdi_additional.conf`. Then insert one line in front of this line like this:  
`#include dahdi-channels.conf`
- After that, you will see the following code like this:  
`#include dahdi-channels.conf`  
`#include chan_dahdi_additional.conf`
- Then save and exit the file

Step 3: Please return to the directory `/etc/asterisk` and run the following commands:

```
asterisk -r
stop now
asterisk -vvvvvvvvvvgc
```

the result will be shown like this:

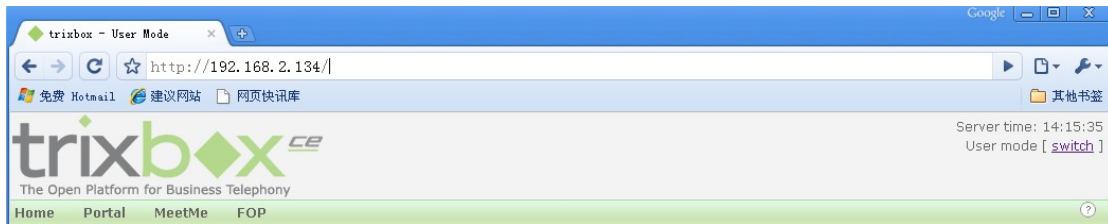
```
trixbox1*CLI> dahdi show channels
```

Chan	Extension	Context	Language	MOH Interpret	Blocked	State
pseudo		default	en	default		In Service
	3	from-pstn	en	default		In Service
	4	from-pstn	en	default		In Service
	5	from-internal	en	default		In Service
	6	from-internal	en	default		In Service

```
trixbox1*CLI>
```

Step 4: In another Windows computer's IE address bar enter your IP:

eg:



Click on the map the upper right corner of the "switch" and enter the username: maint, password: password. Then you can login into the trixbox management system.

You can see the result like this:

System Status Version: 2.6.2.3

click the "PBX " tab at the top line of the page , then click "pbx setting". The result will be shown like this:

Select the "Extensions" tab on the left. You can see the result like this:

Click the drop-down box of Device, and select "Generic ZAP Device". Then click the button "Submit". You would get the following webpage:

Input the number you want to dial in the User Extension textbox, input the same number to the "Display Name" textbox.

In the middle of the page, set the channel number which you want to use.

Please enter the channel number (that is the number of green channel module)(eg:5)

When you complete all of these, please click the button "Submit" in the bottom of the page.

After that, click the yellow button "Apply Configuration Changes" in the top of the page, and select the "Continue with reload" one.

When you finished this step, you have successfully added an "Extensions".

You can add another "Extension" with the same way (eg: channel 6).

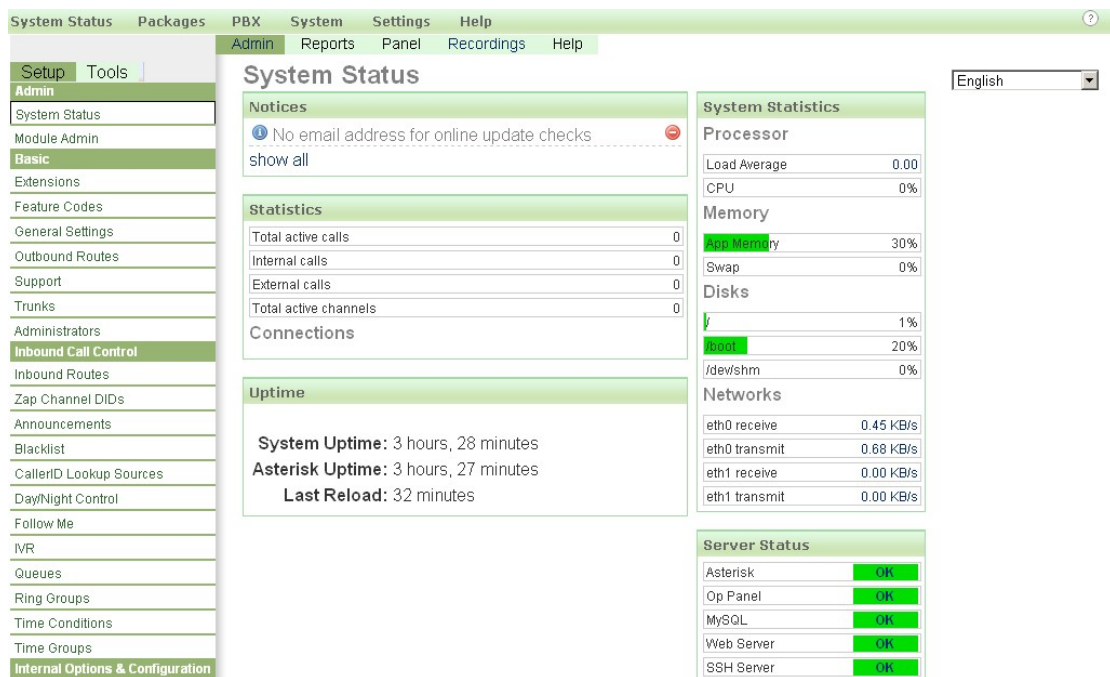
**Step 5:** If you want to set up a sip, please return to the page like this:



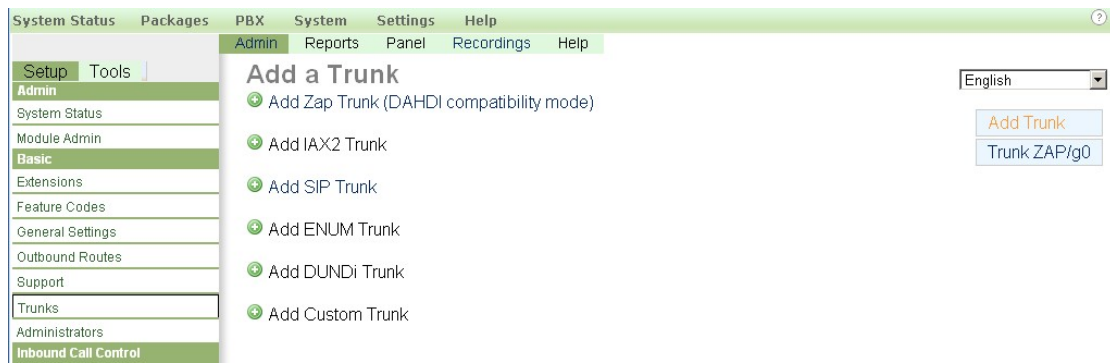
Then, you just select the "Generic SIP Device" and click the button "Submit". You should see the following like this:



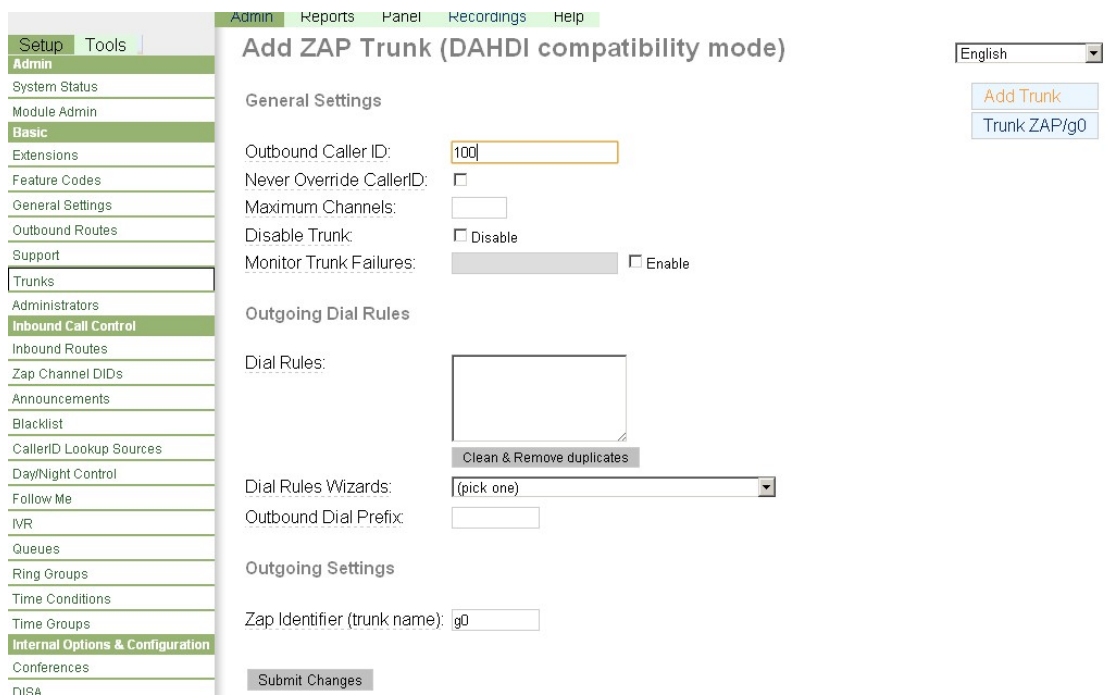
Enter the number you want to dial(eg:3000)in the "User Extension" textbox, and also the "Display Name". In the middle of the page, you must enter your password in the secret textbox. Please keep the default values in other textbox. Then click the Button "Submit" in the bottom of the page. And do not forget to click the yellow tab on the top of the page.  
**Step 6:**If you want to set up an outside line, please return to the main page like this:



Then, please select the tab of the "Trunk" on the left. You will see the following:



Select the first one "Add Zap Trunk(DAHDI Compatibility mode)". You will see:



Enter the Outbound CallerID in the textbox(eg:100). Please keep the default values in other textbox. Then, click the Button "Submit Changes" in the bottom of the page. After that, please click the yellow Button "Apply Configuration Changes" . In the pop-up window, select "continue with reload".

**Step 7:** Set the outbound router

Please click the item of the "Outbound Routes" on the left. Then you will get the following web page:

Enter the name in the Route Name textbox like this (You'd better write something easy to identify)

Route Name:

Route Password:

In the same page , you should add dial patterns as the following

### Dial Patterns

Clean & Remove duplicates

Select a trunk group for the outbound router as the following:

Dial patterns wizards:

Trunk Sequence

Submit Changes

Then, click the Button "Submit Changes". Then please click apply configuration changes as the following:

Click select "Continue with reload" button

### Apply Configuration Changes

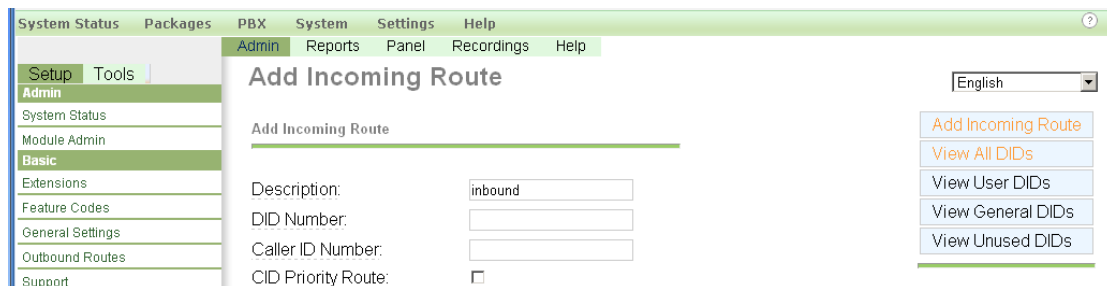
Reloading will apply all configuration changes to your PBX engine and make them active.

Continue with reload  
 Cancel reload and go back to editing

**Step 8:** Set the inbound router

If you want to set up inbound router. Please do it as the following steps.

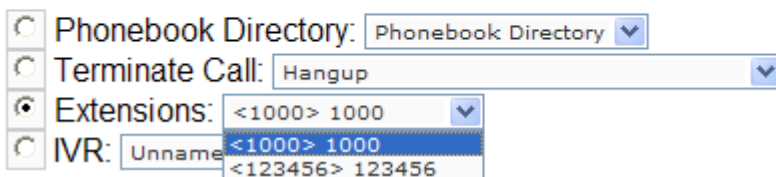
- Return to the main page, select the item "Inbound Router" on the left. You will get the following web page:



- Please enter the description in the Description textbox(eg: inbound).

Add destination phone for the inbound router as the following:

**Set Destination**



here, there are two items to select, but you can't select it until you add extension. Choose one of the items which will answer the inbound call .

- Then, click button "Submit" in the bottom of the page.

Now, you have finished all the configuration tasks.